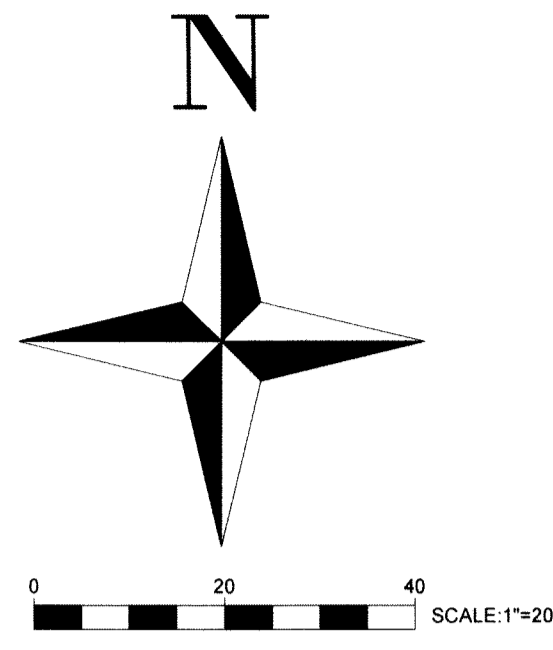
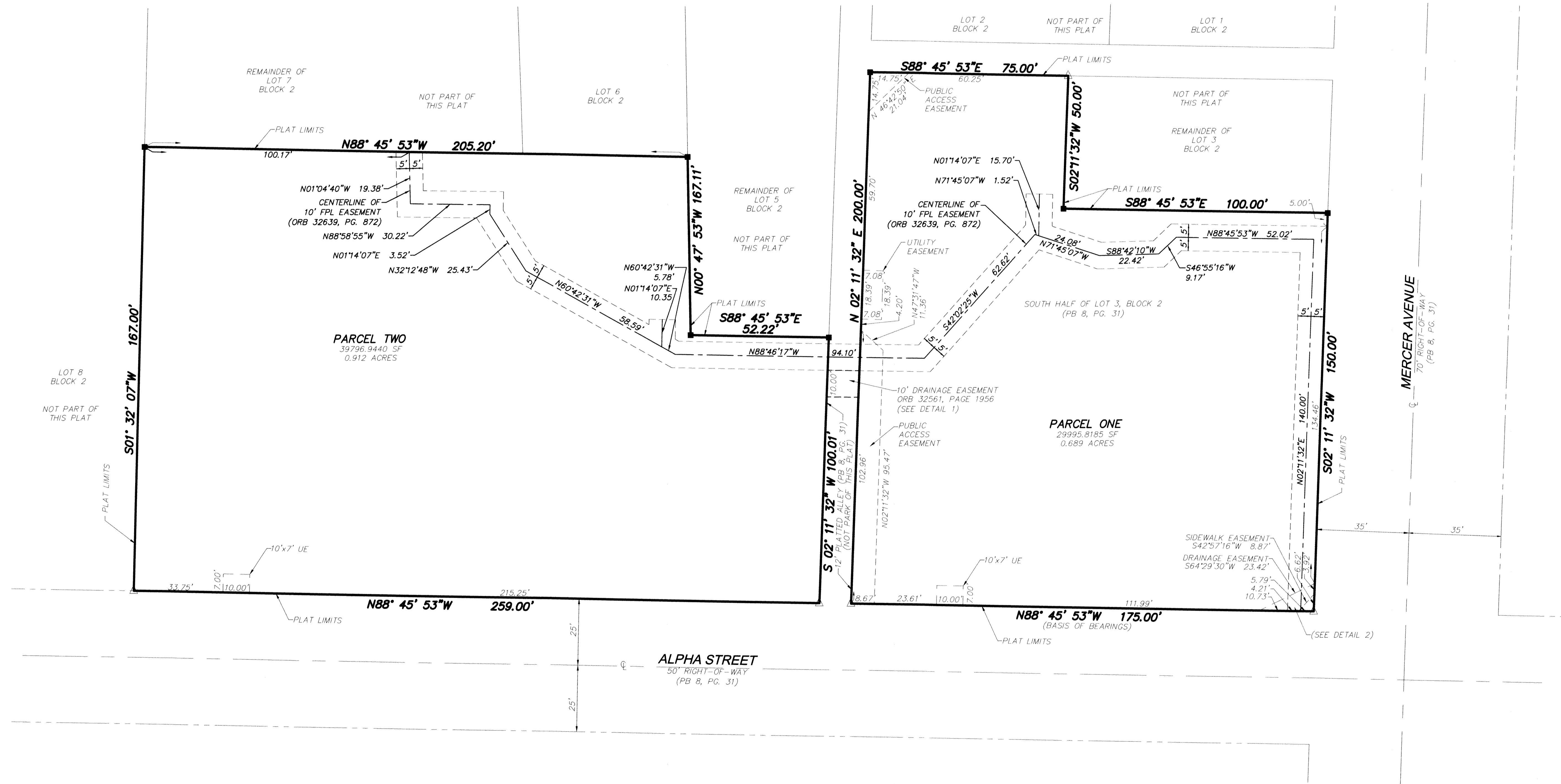
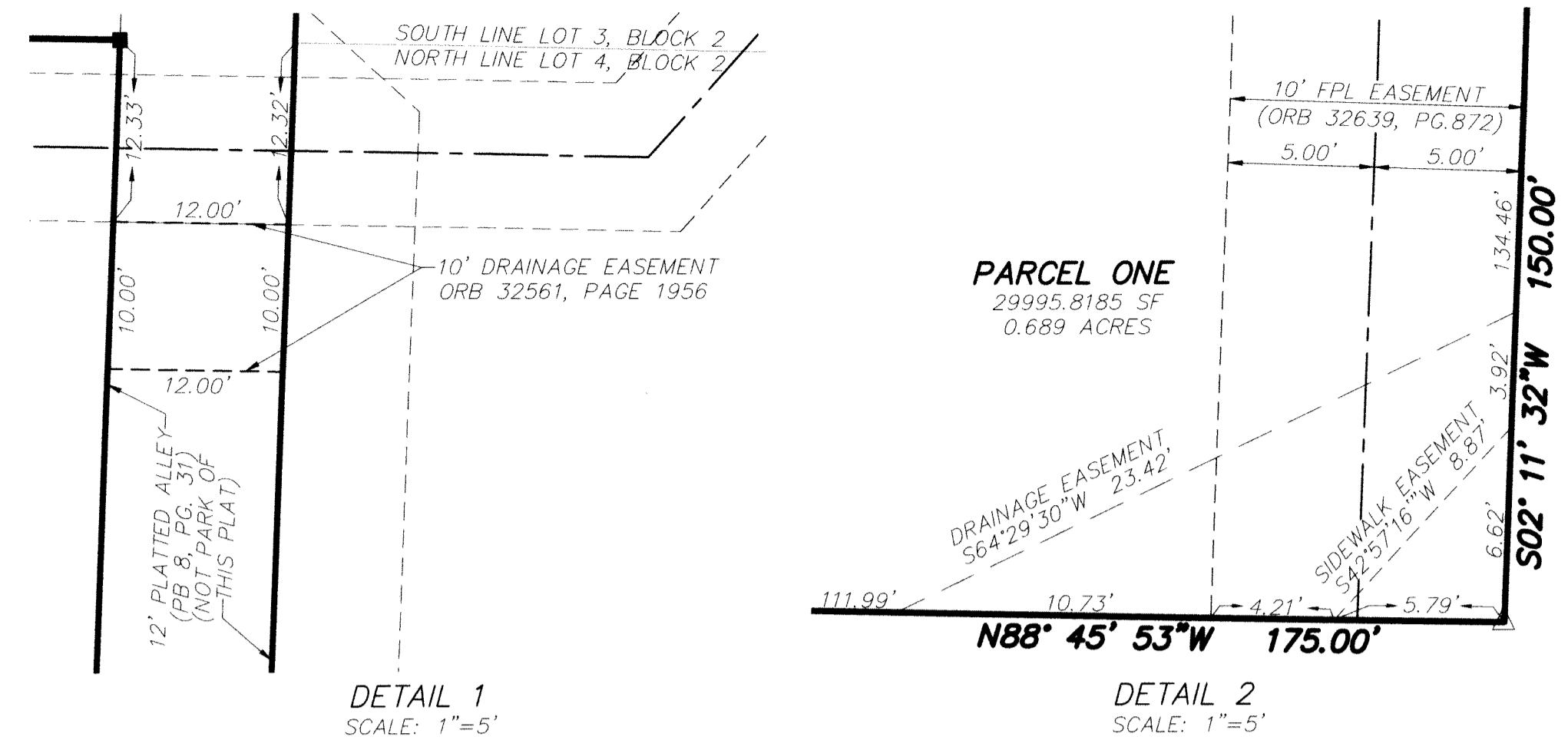


MERCER PARK APARTMENTS

BEING A REPLAT OF A PORTION OF LOTS 3, 4, 5 AND 7 OF BLOCK 2
 GROVE DALE PARK PLAN NO. 1
 ACCORDING TO THE PLAT THEREOF AS RECORDED IN
 PLAT BOOK 8, PAGE 31 OF THE PUBLIC RECORDS OF PALM BEACH COUNTY, FLORIDA,
 LYING IN SECTION 28, TOWNSHIP 43 SOUTH, RANGE 43 EAST,
 CITY OF WEST PALM BEACH, PALM BEACH COUNTY, FLORIDA



SHEET 2 OF 3



ABBREVIATION LEGEND

FPL FLORIDA POWER & LIGHT COMPANY
 ORB OFFICIAL RECORD BOOK
 PB PLAT BOOK
 PG. PAGE
 PUD PLANNED UNIT DEVELOPMENT
 SF SQUARE FEET
 UE UTILITY EASEMENT
 N90°E DESCRIPTION DATA

SYMBOL LEGEND

⊙ CENTERLINE
 ■ SET 4"x4" CONCRETE MONUMENT WITH ALUMINUM DISK
 STAMPED "PRM LB7241"
 ● SET 5/8" IRON ROD WITH PLASTIC CAP
 STAMPED "MEI LB 7241"
 ▲ SET NAIL AND DISK
 STAMPED "MEI LB7241 PRM"

THIS INSTRUMENT WAS PREPARED BY KEVIN M. BECK, P.S.M. IN THE OFFICES
 OF MARLIN ENGINEERING, INC., 10415 RIVERSIDE DRIVE, SUITE 101, PALM
 BEACH GARDENS, FLORIDA, 33410.

DRAWN BY	NAME	DATE
CHECKED BY		
PROJECT NUMBER: 2018073.003		

MARLIN
ENGINEERING

10415 RIVERSIDE DRIVE, SUITE 101,
 PALM BEACH GARDENS, FL 33410
 Tel: (561) 229-0239
 Fax: (305) 477-7590
 L.B. # 7241

SHEET
2 of 3

M:\Survey\Survey Projects\2018\2018073.003 Plat Replating Layout_2.PLOTTED - Dec 22, 2021 - 9:12am PLOTTED BY: Kibick